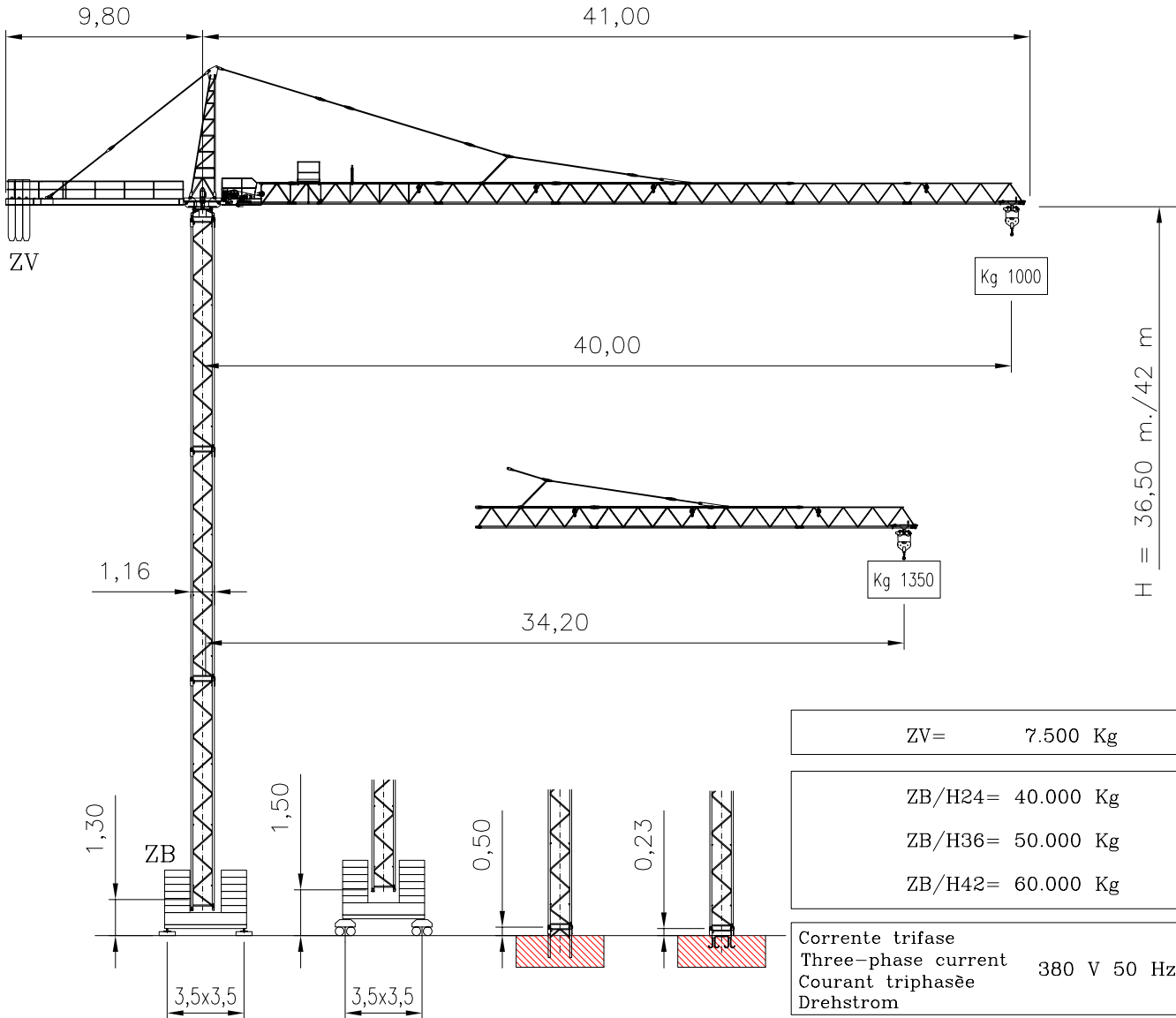


## SERIE CB 4010

## CITY 40/1000



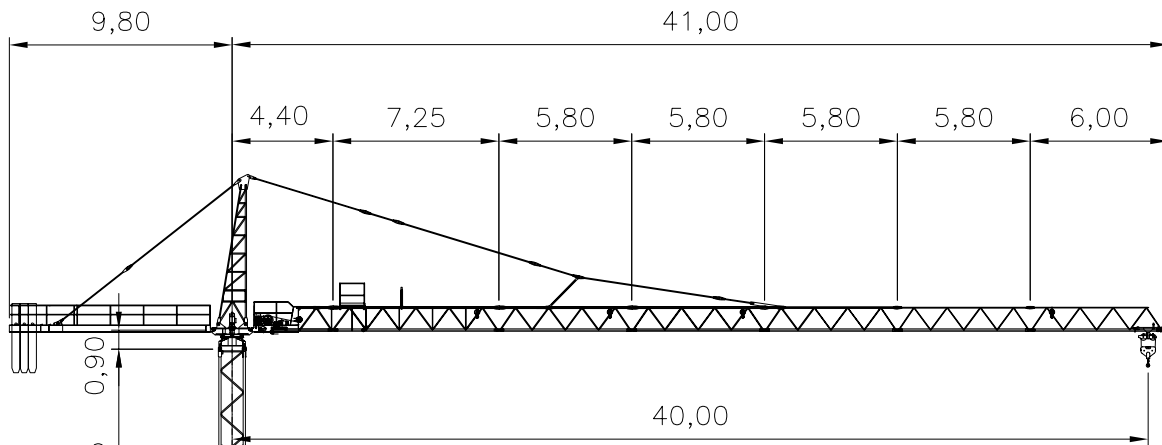
ZV=	7.500 Kg
-----	----------

ZB/H24=	40.000 Kg
ZB/H36=	50.000 Kg
ZB/H42=	60.000 Kg

Corrente trifase Three-phase current Courant triphasée Drehstrom	380 V 50 Hz
---	-------------

Potenza installata Power set up Puissance installée Kraftbedarf	KW 20 (Argano 15 HP) KW 28 (Argano 25 HP)
--	--

	HP 15				HP 25					30/60 m/1' 2,2/2,2 kW
		kg	m/1'			kg	m/1'			
		1500	40		1500	60			0÷1,1 rpm 60 Nm	
		3000	20		3000	30				
		3000	5		3000	7				
		-	-		3000	30			15 m/1' 2x3 kW	
		-	-		6000	15				
		-	-		6000	3,5				



CB 4010 - 40 m - 1000 kg		
HP 15		8 10 12 14 16 18 20 22 24 26 28 30 32 34 36 38 40 3000 2300 1860 1550 1320 1140 1000
HP 25		8 10 12 14 16 18 20 22 24 26 28 30 32 34 36 38 40 3000 2300 1860 1550 1320 1140 1000
HP 25		8.5 10 12 14 16 18 20 22 24 26 28 30 32 34 36 38 40 6000 4120 2970 2300 1860 1550 1320 1140 1000

CB 4010 - 34 m - 1350 kg		
HP 15		8 10 12 14 17.2 18 20 22 24 26 28 30 32 34.2 3000 2850 2270 1870 1580 1350
HP 25		8 10 12 14 17.2 18 20 22 24 26 28 30 32 34.2 3000 2850 2270 1870 1580 1350
HP 25		8 9.3 12 14 16 18 20 22 24 26 28 30 32 34.2 6000 3800 2850 2270 1870 1580 1350

CB 4010

REAZIONE  
R Kg 45.000  
REACTION

DIN 15028 H<sub>1</sub> B<sub>2</sub> B<sub>3</sub> DIN 15019

MODIFICHE RISERVATE  
SUBJECT TO MODIFICATION  
RESERVA DE MODIFICACIONES  
MODIFICATIONS RESERVEES  
ANDERUNGEN VORBEHALTEN

