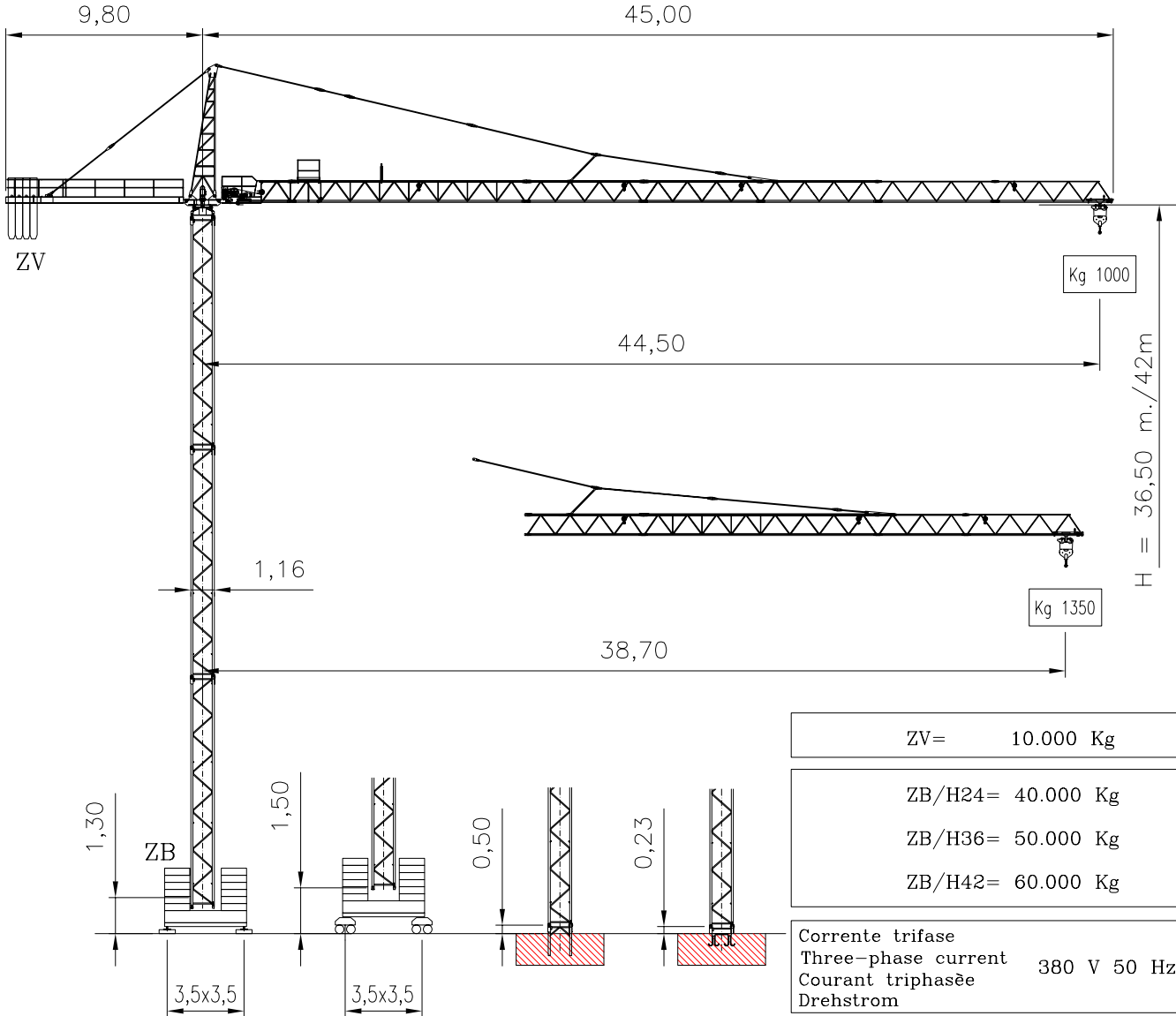


SERIE CB 4510

CITY 45/1000



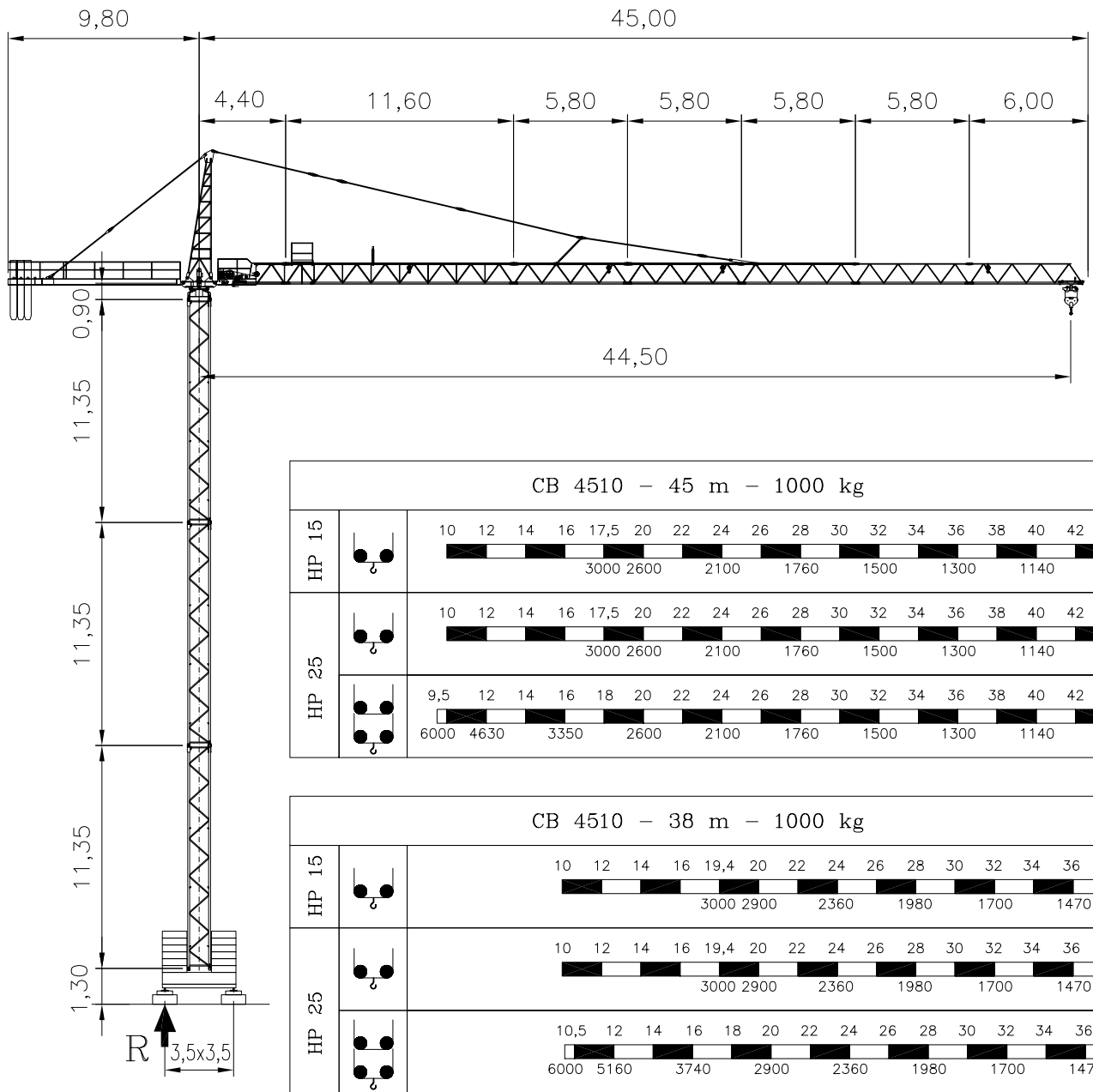
ZV=	10.000 Kg
-----	-----------

ZB/H24=	40.000 Kg
ZB/H36=	50.000 Kg
ZB/H42=	60.000 Kg

Corrente trifase	380 V 50 Hz
Three-phase current	
Courant triphasée	
Drehstrom	

Potenza installata	KW 20 (Argano 15 HP)
Power set up	
Puissance installée	KW 28 (Argano 25 HP)
Kraftbedarf	

	HP 15				HP 25					30/60 m/1' 2,2/2,2 kW
		kg	m/1'			kg	m/1'			
		1500	40		1500	60		0 ÷ 1,1 rpm 60 Nm		
		3000	20		3000	30				
		3000	5		3000	7		15 m/1' 2x3 kW		
		-	-		3000	30				
		-	-		6000	15				
		-	-		6000	3,5				



CB 4510

REAZIONE
R Kg 48.000
REACTION

DIN 15028 H₁ B₂ B₃ DIN 15019

MODIFICHE RISERVATE
SUBJECT TO MODIFICATION
RESERVA DE MODIFICACIONES
MODIFICATIONS RESERVEES
ANDERUNGEN VORBEHALTEN

