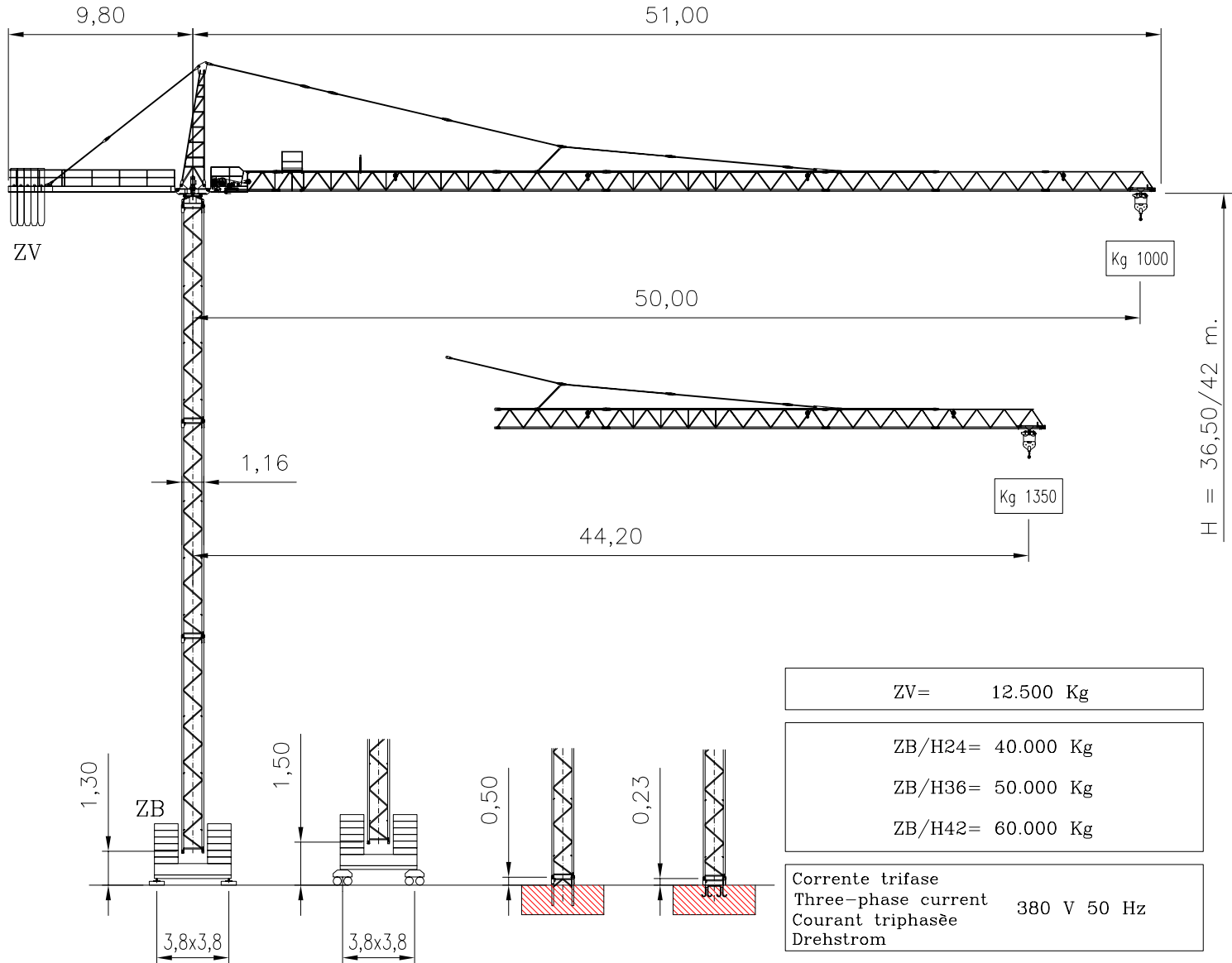


SERIE CB 5010

CITY 50/1000



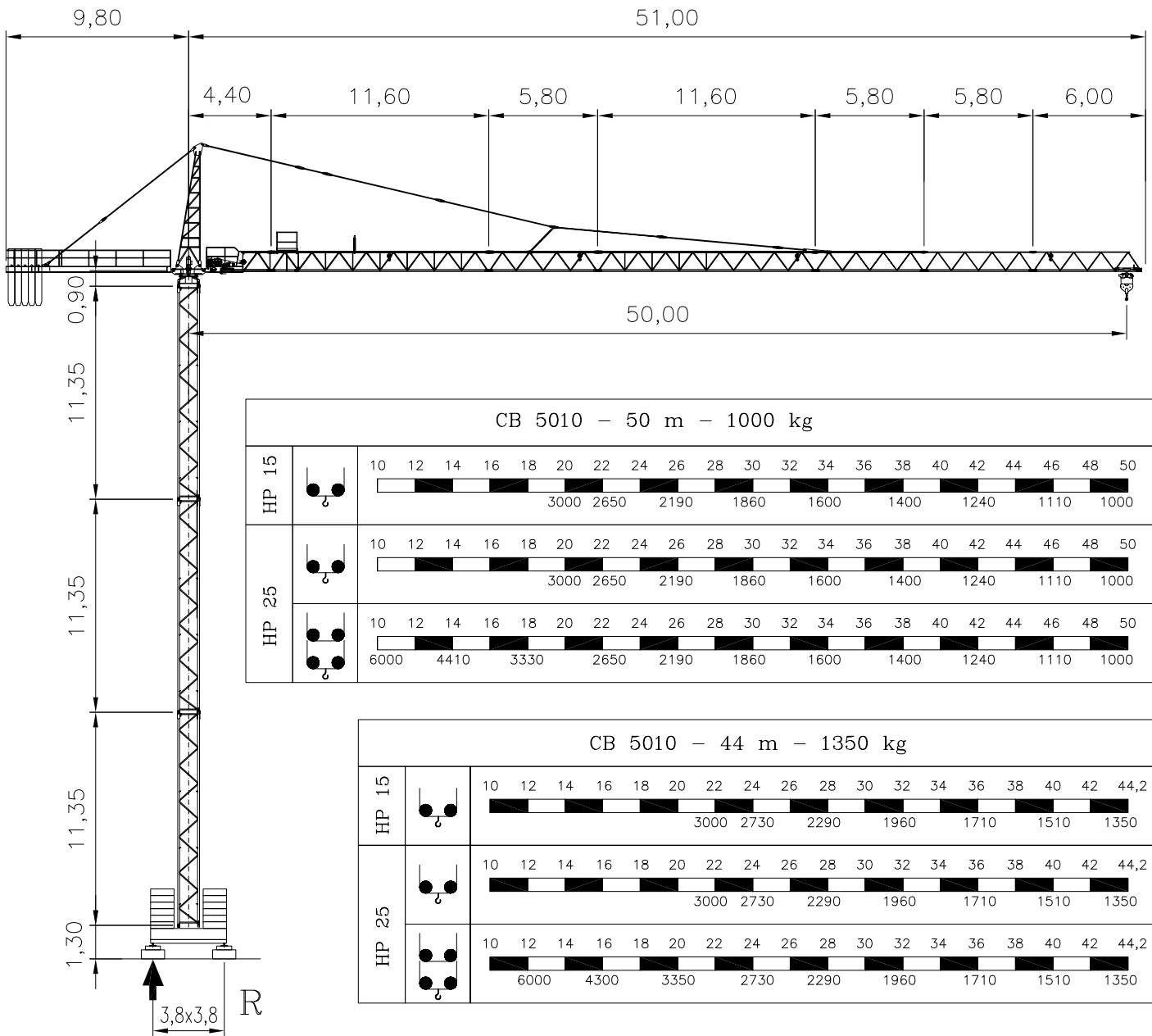
ZV=	12.500 Kg
-----	-----------

ZB/H24=	40.000 Kg
ZB/H36=	50.000 Kg
ZB/H42=	60.000 Kg

Corrente trifase	380 V 50 Hz
Three-phase current	
Courant triphasée	
Drehstrom	

Potenza installata	KW 22 (Argano 15 HP)
Power set up	
Puissance installée	KW 30 (Argano 25 HP)
Kraftbedarf	

	HP 15				HP 25					30/60 m/1' 2,2/2,2 kW
		kg	m/1'			kg	m/1'			
		1500	40			1500	60			0÷1,1 rpm 2x40 Nm
		3000	20			3000	30			
		3000	5			3000	7			
		-	-			3000	30			15 m/1' 2x3 kW
		-	-			6000	15			
		-	-			6000	3,5			



CB 5010

REAZIONE
R Kg 45.000
REACTION

DIN 15028 H₁ B₂ B₃ DIN 15019

MODIFICHE RISERVATE
SUBJECT TO MODIFICATION
RESERVA DE MODIFICACIONES
MODIFICATIONS RESERVEES
ANDERUNGEN VORBEHALTEN

